

## Turf Reinforcement Mesh

TurfProtecta® is a black or green, lightweight polyethylene mesh for grass reinforcement where occasional light vehicular or pedestrian use is required for car parking or access routes. Supplied in 2m x 30m rolls and in two grades, 'Standard' and 'Heavy' as determined by the application. The mesh is ideal for reinforcing grassed surfaces prone to wear and smearing which can create a muddy surface incapable of being used.

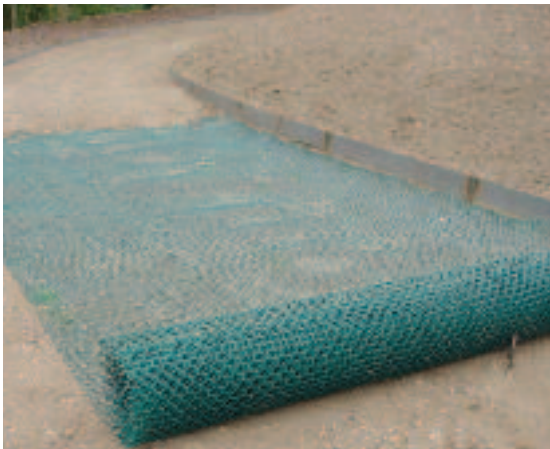
Manufactured from 100% recycled high density polyethylene, the mesh is UV stabilised and simple to install; after cutting the grass short, the mesh is unrolled and pinned to the surface using metal U-Pins or plastic pegs. By allowing plants to grow through the mesh apertures, the sward intertwines with the mesh filaments creating a strong, discreetly reinforced surface, limiting damage and reducing soil compaction. It is advisable to allow the grass to fully establish before the area is used to create a stronger reinforced surface (this may take only a few weeks to a few months depending on the grass growing season). The grass can however be mown, rolled and fertilised as usual during this period. TurfProtecta® can be installed onto existing grassed surfaces or newly landscaped areas, for both permanent or temporary applications.

It is strongly recommended that installation be carried out during the growing season to allow a strong interlock between the mesh and the grass roots.



Ideal for:

- Overflow grass car parks
- Pedestrianised grassed areas
- Footpaths and wheelchair access routes
- Residential parking



TurfProtecta® can also be laid on top of a level, well drained, seeded soil, pinned and then covered with a layer of topsoil and seed.



Within a few weeks the grass will grow through the mesh, creating a reinforced natural grassed surface.



TurfProtecta® allows the grass to grow through the mesh holes. The mesh will disappear beneath the grass surface.



Newly landscaped installation... Green TurfProtecta® laid and covered with a layer of topsoil and seed.



After just a few weeks... the grass grows through the mesh offering a strong stabilised surface.



After a few months of the growing season, the grass roots have intertwined with the mesh filaments creating a strong stable surface capable of withstanding heavy pedestrian and occasional vehicular use. The grass can be cut as normal and has regained its natural appearance.

## Installation Service:

Boddingtons offer an optional installation service. For further information on our dedicated and professional installation team, please refer to page 21 or contact us on 01621 874200.



## Technical Information



Please contact our technical sales team for further technical literature or advice:

- Specification & Installation guidance
- Product data sheets
- Case studies
- Installation locations

Available to download online at [www.grass-reinforcement.com](http://www.grass-reinforcement.com)

## Fixing Pins & Pegs



Steel U-pins or plastic pegs to secure TurfProtecta® to the ground. Yellow marker pegs are available if required.

PRODUCT	U-PINS	BLACK PEGS
MATERIAL	STEEL	PLASTIC
SIZE (mm)	170 x 70 x 6 dia	140 long
OUTER	50 pack	100 pack
PART No.	041824	060351

SIZE	GRADE	COLOUR	MESH APERTURE	WEIGHT	TENSILE STRENGTH	MATERIAL	PART No.
2m x 30m	Standard	Black	25mm x 29mm	550g/m <sup>2</sup>	5.9kN/m (MD) 7.1kN/m (TD)	HDPE 100% Recycled	009862
2m x 30m	Standard	Green	25mm x 29mm	550g/m <sup>2</sup>	5.9kN/m (MD) 7.1kN/m (TD)	HDPE 100% Recycled	049202
2m x 30m	Heavy	Black	22mm x 27mm	660g/m <sup>2</sup>	6.2kN/m (MD) 7.5kN/m (TD)	HDPE 100% Recycled	048175
2m x 30m	Heavy	Green	22mm x 27mm	660g/m <sup>2</sup>	6.2kN/m (MD) 7.5kN/m (TD)	HDPE 100% Recycled	049967

MD - Machine Direction TD - Transverse Direction

Tel: +44 (0) 1621 874200  
[www.grass-reinforcement.com](http://www.grass-reinforcement.com)